

Schedule 40 and 80 Rigid PVC Conduit

Trade Size	Part Number		Dimensions (in)		Crate Quantity (ft)	
	10 Foot	20 Foot	Average Outside Diameter	Minimum Wall Thickness	10 Foot	20 Foot
Schedule 40						
½	4005010	4005020	0.840	0.109	6,000	12,000
¾	4007510	4007520	1.050	0.113	4,400	8,800
1	4010010	4010020	1.315	0.133	3,600	7,200
1¼	4012510	4012520	1.660	0.140	3,300	6,600
1½	4015010	4015020	1.900	0.145	2,250	4,500
2	4020010	4020020	2.375	0.154	1,400	2,800
2½	4025010	4025020	2.875	0.203	930	1,860
3	4030010	4030020	3.500	0.216	880	1,760
3½	4035010	4035020	4.000	0.226	630	1,260
4	4040010	4040020	4.500	0.237	570	1,140
5	4050010	4050020	5.563	0.258	380	760
6	4060010	4060020	6.625	0.280	260	520
8*	4080010	4080020	8.625	0.322	140	280
Schedule 80						
½	8005010	8005020	0.840	0.147	6,000	12,000
¾	8007510	8007520	1.050	0.154	4,400	8,800
1	8010010	8010020	1.315	0.179	3,600	7,200
1¼	8012510	8012520	1.660	0.191	3,300	6,600
1½	8015010	8015020	1.900	0.200	2,250	4,500
2	8020010	8020020	2.375	0.218	1,400	2,800
2½	8025010	8025020	2.875	0.276	930	1,860
3	8030010	8030020	3.500	0.300	880	1,760
3½	8035010	8035020	4.000	0.318	630	1,260
4	8040010	8040020	4.500	0.377	570	1,140
5	8050010	8050020	5.563	0.375	380	760
6	8060010	8060020	6.625	0.432	260	520
8*	8080010	8080020	8.625	0.500	140	280

*8 inch products are not included in UL 651 and are therefore not certified by ETL
Product availability varies by region and minimum run quantities may apply



Rated for use with 90 degree C wiring
Sunlight resistant per UL 651
Conforms to UL 651 and NEMA TC 2



Utility Duct Rigid PVC Conduit

Trade Size	Part Number 20 Foot	Dimensions (in)		Crate Quantity (ft)
		Average Outside Diameter	Minimum Wall Thickness	
DB-60				
2	6020020	2.375	0.060	2,800
3	6030020	3.500	0.092	1,760
4	6040020	4.500	0.121	1,140
5	6050020	5.563	0.152	760
6	6060020	6.625	0.182	520
DB-100				
3	1030020	3.500	0.112	1,760
4	1040020	4.500	0.145	1,140
5	1050020	5.563	0.179	760
6	1060020	6.625	0.213	520
DB-120				
1	1210020	1.315	0.060	7,200
1½	1215020	1.900	0.060	4,500
2	1220020	2.375	0.077	2,800
3	1230020	3.500	0.118	1,760
4	1240020	4.500	0.154	1,140
5	1250020	5.563	0.191	760
6	1260020	6.625	0.227	520

If you don't see the product you require, please call for availability
 Product availability varies by region and minimum run quantities may apply
 Conforms to NEMA TC 6 & 8 and ASTM F 512



Utility/C-Duct Rigid PVC Conduit

Trade Size	Part Number 20 Foot	Dimensions (in)		Crate Quantity (ft)
		Average Outside Diameter	Minimum Wall Thickness	
EB-20				
3	2030020	3.500	0.061	1,760
4	2040020	4.500	0.082	1,140
5	2050020	5.563	0.103	760
6	2060020	6.625	0.125	520
EB-35				
3	3530020	3.500	0.076	1,760
4	3540020	4.500	0.100	1,140
5	3550020	5.563	0.126	760
6	3560020	6.625	0.152	520

Product availability varies by region and minimum run quantities may apply
EB products conform to NEMA TC 6 & 8 and ASTM F 512

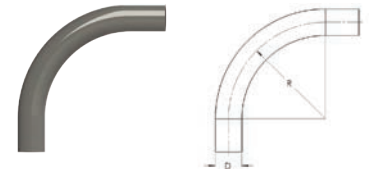
Trade Size	Part Number 20 Foot	Dimensions (in)		Crate Quantity (ft)
		Average Outside Diameter	Minimum Wall Thickness	
C-Duct				
4 (white)	9040020WHT	4.350	0.140	1,260
4 (gray)	9040020	4.350	0.140	1,260

C-Duct compliance with CAO-8546 varies by region

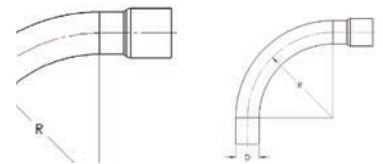


Schedule 40 Standard Radius Elbows

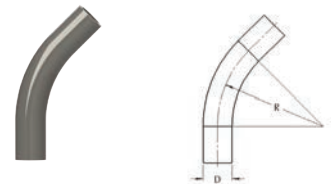
Trade Size	Part Number		Dimensions (in)		Package Quantity
	Plain End	Bell End	Average Outside Diameter, D	Radius R	
90°					
½	F4005090P	F4005090	0.840	4.00	50
¾	F4007590P	F4007590	1.050	4.50	25
1	F4010090P	F4010090	1.315	5.75	25
1¼	F4012590P	F4012590	1.660	7.25	25
1½	F4015090P	F4015090	1.900	8.25	25
2	F4020090P	F4020090	2.375	9.50	25
2½	F4025090P	F4025090	2.875	10.50	50
3	F4030090P	F4030090	3.500	13.00	50
3½	F4035090P	F4035090	4.000	15.00	25
4	F4040090P	F4040090	4.500	16.00	25
5	F4050090P	F4050090	5.563	24.00	20
6	F4060090P	F4060090	6.625	30.00	16
45°					
½	F4005045P	F4005045	0.840	4.00	50
¾	F4007545P	F4007545	1.050	4.50	25
1	F4010045P	F4010045	1.315	5.75	25
1¼	F4012545P	F4012545	1.660	7.25	25
1½	F4015045P	F4015045	1.900	8.25	25
2	F4020045P	F4020045	2.375	9.50	25
2½	F4025045P	F4025045	2.875	10.50	50
3	F4030045P	F4030045	3.500	13.00	50
3½	F4035045P	F4035045	4.000	15.00	25
4	F4040045P	F4040045	4.500	16.00	25
5	F4050045P	F4050045	5.563	24.00	20
6	F4060045P	F4060045	6.625	30.00	16



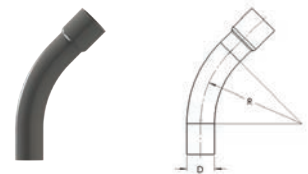
90° Plain End



90° Bell End



45° Plain End

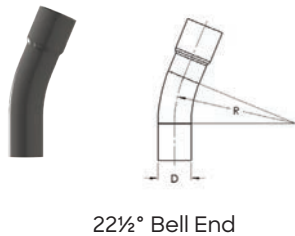
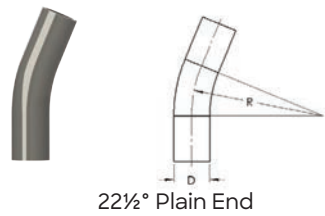
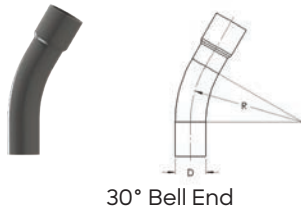
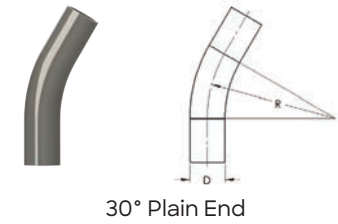


45° Bell End

Product availability varies by region and minimum run quantities may apply
Listed to Safety Standard UL 651



Schedule 40 Standard Radius Elbows



Trade Size	Part Number		Dimensions (in)		Package Quantity
	Plain End	Bell End	Average Outside Diameter, D	Radius R	
30°					
¾	F4007530P	F4007530	1.050	4.50	25
1	F4010030P	F4010030	1.315	5.75	25
1¼	F4012530P	F4012530	1.660	7.25	25
1½	F4015030P	F4015030	1.900	8.25	25
2	F4020030P	F4020030	2.375	9.50	25
2½	F4025030P	F4025030	2.875	10.50	20
3	F4030030P	F4030030	3.500	13.00	50
3½	F4035030P	F4035030	4.000	15.00	25
4	F4040030P	F4040030	4.500	16.00	25
5	F4050030P	F4050030	5.563	24.00	20
6	F4060030P	F4060030	6.625	30.00	16
22½°					
¾	F4007522P	F4007522	1.050	4.50	25
1	F4010022P	F4010022	1.315	5.75	25
1¼	F4012522P	F4012522	1.660	7.25	25
1½	F4015022P	F4015022	1.900	8.25	25
2	F4020022P	F4020022	2.375	9.50	25
2½	F4025022P	F4025022	2.875	10.50	20
3	F4030022P	F4030022	3.500	13.00	50
3½	F4035022P	F4035022	4.000	15.00	25
4	F4040022P	F4040022	4.500	16.00	25
5	F4050022P	F4050022	5.563	24.00	20
6	F4060022P	F4060022	6.625	30.00	16

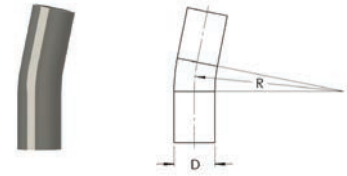
Product availability varies by region and minimum run quantities may apply
Listed to Safety Standard UL 651



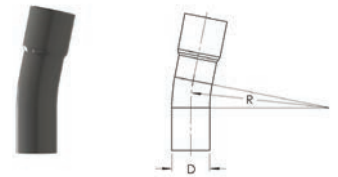
Schedule 40 Standard Radius Elbows

Trade Size	Part Number		Dimensions (in)		Package Quantity
	Plain End	Bell End	Average Outside Diameter, D	Radius R	
11¼°					
¾	F4007511P	F4007511	1.050	4.50	25
1	F4010011P	F4010011	1.315	5.75	25
1¼	F4012511P	F4012511	1.660	7.25	25
1½	F4015011P	F4015011	1.900	8.25	25
2	F4020011P	F4020011	2.375	9.50	25
2½	F4025011P	F4025011	2.875	10.50	20
3	F4030011P	F4030011	3.500	13.00	50
3½	F4035011P	F4035011	4.000	15.00	25
4	F4040011P	F4040011	4.500	16.00	25
5	F4050011P	F4050011	5.563	24.00	20
6	F4060011P	F4060011	6.625	30.00	16

Product availability varies by region and minimum run quantities may apply
Listed to Safety Standard UL 651

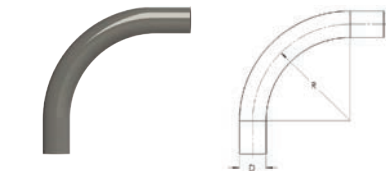


11¼° Plain End

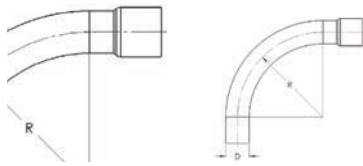


11¼° Bell End

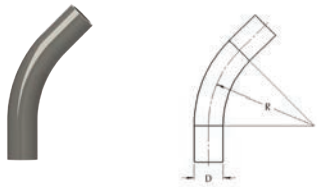
Schedule 80 Standard Radius Elbows



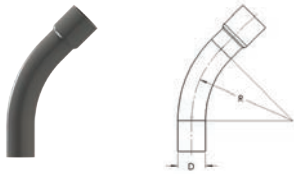
90° Plain End



90° Bell End



45° Plain End



45° Bell End

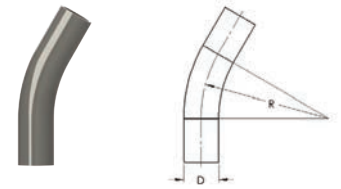
Trade Size	Part Number		Dimensions (in)		Package Quantity
	Plain End	Bell End	Average Outside Diameter, D	Radius R	
90°					
½	F8005090P	F8005090	0.840	4.00	50
¾	F8007590P	F8007590	1.050	4.50	25
1	F8010090P	F8010090	1.315	5.75	25
1¼	F8012590P	F8012590	1.660	7.25	25
1½	F8015090P	F8015090	1.900	8.25	25
2	F8020090P	F8020090	2.375	9.50	25
2½	F8025090P	F8025090	2.875	10.50	50
3	F8030090P	F8030090	3.500	13.00	50
3½	F8035090P	F8035090	4.000	15.00	25
4	F8040090P	F8040090	4.500	16.00	25
5	F8050090P	F8050090	5.563	24.00	20
6	F8060090P	F8060090	6.625	30.00	16
45°					
½	F8005045P	F8005045	0.840	4.00	50
¾	F8007545P	F8007545	1.050	4.50	25
1	F8010045P	F8010045	1.315	5.75	25
1¼	F8012545P	F8012545	1.660	7.25	25
1½	F8015045P	F8015045	1.900	8.25	25
2	F8020045P	F8020045	2.375	9.50	25
2½	F8025045P	F8025045	2.875	10.50	50
3	F8030045P	F8030045	3.500	13.00	50
3½	F8035045P	F8035045	4.000	15.00	25
4	F8040045P	F8040045	4.500	16.00	25
5	F8050045P	F8050045	5.563	24.00	20
6	F8060045P	F8060045	6.625	30.00	16

Product availability varies by region and minimum run quantities may apply
Listed to Safety Standard UL 651

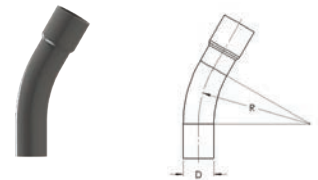


Schedule 80 Standard Radius Elbows

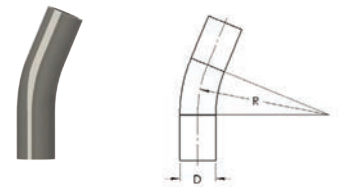
Trade Size	Part Number		Dimensions (in)		Package Quantity
	Plain End	Bell End	Average Outside Diameter, D	Radius R	
30°					
¾	F8007530P	F8007530	1.050	4.50	25
1	F8010030P	F8010030	1.315	5.75	25
1¼	F8012530P	F8012530	1.660	7.25	25
1½	F8015030P	F8015030	1.900	8.25	25
2	F8020030P	F8020030	2.375	9.50	25
2½	F8025030P	F8025030	2.875	10.50	20
3	F8030030P	F8030030	3.500	13.00	50
3½	F8035030P	F8035030	4.000	15.00	25
4	F8040030P	F8040030	4.500	16.00	25
5	F8050030P	F8050030	5.563	24.00	20
6	F8060030P	F8060030	6.625	30.00	16
22½°					
¾	F8007522P	F8007522	1.050	4.50	25
1	F8010022P	F8010022	1.315	5.75	25
1¼	F8012522P	F8012522	1.660	7.25	25
1½	F8015022P	F8015022	1.900	8.25	25
2	F8020022P	F8020022	2.375	9.50	25
2½	F8025022P	F8025022	2.875	10.50	20
3	F8030022P	F8030022	3.500	13.00	50
3½	F8035022P	F8035022	4.000	15.00	25
4	F8040022P	F8040022	4.500	16.00	25
5	F8050022P	F8050022	5.563	24.00	20
6	F8060022P	F8060022	6.625	30.00	16



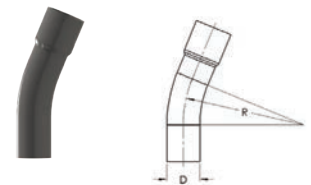
30° Plain End



30° Bell End



22½° Plain End

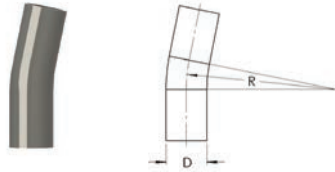


22½° Bell End

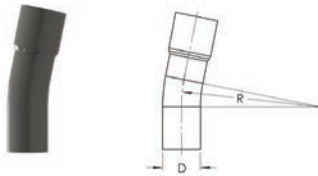
Product availability varies by region and minimum run quantities may apply
Listed to Safety Standard UL 651



Schedule 80 Standard Radius Elbows



11¼° Plain End



11¼° Bell End

Trade Size	Part Number		Dimensions (in)		Package Quantity
	Plain End	Bell End	Average Outside Diameter, D	Radius R	
11¼°					
¾	F8007511P	F8007511	1.050	4.50	25
1	F8010011P	F8010011	1.315	5.75	25
1¼	F8012511P	F8012511	1.660	7.25	25
1½	F8015011P	F8015011	1.900	8.25	25
2	F8020011P	F8020011	2.375	9.50	25
2½	F8025011P	F8025011	2.875	10.50	20
3	F8030011P	F8030011	3.500	13.00	50
3½	F8035011P	F8035011	4.000	15.00	25
4	F8040011P	F8040011	4.500	16.00	25
5	F8050011P	F8050011	5.563	24.00	20
6	F8060011P	F8060011	6.625	30.00	16

Product availability varies by region and minimum run quantities may apply
Listed to Safety Standard UL 651



Schedule 40

Plain End Special Radius Elbows

Trade Size	Part Number						Package Quantity
	18" Radius	24" Radius	30" Radius	36" Radius	48" Radius	60" Radius	
90°							
1	F401009018P	F401009024P	F401009030P	F401009036P	F401009048P	F401009060P	25
1¼	F401259018P	F401259024P	F401259030P	F401259036P	F401259048P	F401259060P	25
1½	F401509018P	F401509024P	F401509030P	F401509036P	F401509048P	F401509060P	25
2	F402009018P	F402009024P	F402009030P	F402009036P	F402009048P	F402009060P	50
2½	F402509018P	F402509024P	F402509030P	F402509036P	F402509048P	F402509060P	50
3	F403009018P	F403009024P	F403009030P	F403009036P	F403009048P	F403009060P	50
3½	F403509018P	F403509024P	F403509030P	F403509036P	F403509048P	F403509060P	25
4	F404009018P	F404009024P	F404009030P	F404009036P	F404009048P	F404009060P	25
5	-	F4050090P	F405009030P	F405009036P	F405009048P	F405009060P	20
6	-	-	F4060090P	F406009036P	F406009048P	F406009060P	16
45°							
1	F401004518P	F401004524P	F401004530P	F401004536P	F401004548P	F401004560P	25
1¼	F401254518P	F401254524P	F401254530P	F401254536P	F401254548P	F401254560P	25
1½	F401504518P	F401504524P	F401504530P	F401504536P	F401504548P	F401504560P	25
2	F402004518P	F402004524P	F402004530P	F402004536P	F402004548P	F402004560P	50
2½	F402504518P	F402504524P	F402504530P	F402504536P	F402504548P	F402504560P	50
3	F403004518P	F403004524P	F403004530P	F403004536P	F403004548P	F403004560P	50
3½	F403504518P	F403504524P	F403504530P	F403504536P	F403504548P	F403504560P	25
4	F404004518P	F404004524P	F404004530P	F404004536P	F404004548P	F404004560P	25
5	-	F4050045P	F405004530P	F405004536P	F405004548P	F405004560P	20
6	-	-	F4060045P	F406004536P	F406004548P	F406004560P	16

Call for availability on 30°, 22½° and 11¼° special radius elbows
 Product availability varies by region and minimum run quantities may apply
 Listed to Safety Standard UL 651



Schedule 40 Bell End Special Radius Elbows

Trade Size	Part Number						Package Quantity
	18" Radius	24" Radius	30" Radius	36" Radius	48" Radius	60" Radius	
90°							
1	F401009018	F401009024	F401009030	F401009036	F401009048	F401009060	25
1¼	F401259018	F401259024	F401259030	F401259036	F401259048	F401259060	25
1½	F401509018	F401509024	F401509030	F401509036	F401509048	F401509060	25
2	F402009018	F402009024	F402009030	F402009036	F402009048	F402009060	50
2½	F402509018	F402509024	F402509030	F402509036	F402509048	F402509060	50
3	F403009018	F403009024	F403009030	F403009036	F403009048	F403009060	50
3½	F403509018	F403509024	F403509030	F403509036	F403509048	F403509060	25
4	F404009018	F404009024	F404009030	F404009036	F404009048	F404009060	25
5	-	F4050090	F405009030	F405009036	F405009048	F405009060	20
6	-	-	F4060090	F406009036	F406009048	F406009060	16
45°							
1	F401004518	F401004524	F401004530	F401004536	F401004548	F401004560	25
1¼	F401254518	F401254524	F401254530	F401254536	F401254548	F401254560	25
1½	F401504518	F401504524	F401504530	F401504536	F401504548	F401504560	25
2	F402004518	F402004524	F402004530	F402004536	F402004548	F402004560	50
2½	F402504518	F402504524	F402504530	F402504536	F402504548	F402504560	50
3	F403004518	F403004524	F403004530	F403004536	F403004548	F403004560	50
3½	F403504518	F403504524	F403504530	F403504536	F403504548	F403504560	25
4	F404004518	F404004524	F404004530	F404004536	F404004548	F404004560	25
5	-	F4050045	F405004530	F405004536	F405004548	F405004560	20
6	-	-	F4060045	F406004536	F406004548	F406004560	16

Call for availability on 30°, 22½° and 11¼° special radius elbows
 Product availability varies by region and minimum run quantities may apply
 Listed to Safety Standard UL 651



Schedule 80 Special Radius Elbows

Trade Size	Part Number			Package Quantity
	24" Radius	36" Radius	48" Radius	
Plain End 90°				
2	F802009024P	F802009036P	F802009048P	50
2½	F802509024P	F802509036P	F802509048P	50
3	F803009024P	F803009036P	F803009048P	50
4	F804009024P	F804009036P	F804009048P	25
5	F8050090P	F805009036P	F805009048P	20
6	-	F806009036P	F806009048P	16
Plain End 45°				
2	F802004524P	F802004536P	F802004548P	50
2½	F802504524P	F802504536P	F802504548P	50
3	F803004524P	F803004536P	F803004548P	50
4	F804004524P	F804004536P	F804004548P	25
5	F8050045P	F805004536P	F805004548P	20
6	-	F806004536P	F806004548P	16
Bell End 90°				
2	F802009024	F802009036	F802009048	50
2½	F802509024	F802509036	F802509048	50
3	F803009024	F803009036	F803009048	50
4	F804009024	F804009036	F804009048	25
5	F8050090	F805009036	F805009048	20
6	-	F806009036	F806009048	16
Bell End 45°				
2	F802004524	F802004536	F802004548	50
2½	F802504524	F802504536	F802504548	50
3	F803004524	F803004536	F803004548	50
4	F804004524	F804004536	F804004548	25
5	F8050045	F805004536	F805004548	20
6	-	F806004536	F806004548	16

Call for availability on 30°, 22½° and 11¼° special radius elbows
Product availability varies by region and minimum run quantities may apply
Listed to Safety Standard UL 651



Utility/C-Duct Special Radius Sweeps

Utility Duct

Trade Size	Part Number				Package Quantity
	24" Radius	36" Radius	48" Radius	60" Radius	
90°					
1	F121009024	F121009036	F121009048	F121009060	25
2	F122009024	F122009036	F122009048	F122009060	50
3	F123009024	F123009036	F123009048	F123009060	50
4	F124009024	F124009036	F124009048	F124009060	25
5	F125009024	F125009036	F125009048	F125009060	20
6	-	F126009036	F126009048	F126009060	16
45°					
1	F121004524	F121004536	F121004548	F121004560	25
2	F122004524	F122004536	F122004548	F122004560	50
3	F123004524	F123004536	F123004548	F123004560	50
4	F124004524	F124004536	F124004548	F124004560	25
5	F125004524	F125004536	F125004548	F125004560	20
6	-	F126004536	F126004548	F126004560	16
22½°					
1	F121002224	F121002236	F121002248	F121002260	25
2	F122002224	F122002236	F122002248	F122002260	50
3	F123002224	F123002236	F123002248	F123002260	50
4	F124002224	F124002236	F124002248	F124002260	25
5	F125002224	F125002236	F125002248	F125002260	20
6	-	F126002236	F126002248	F126002260	16

Sweeps made from DB120, but can be used with any EB or DB duct

4" C-Duct

Degree	Part Number				Package Quantity
	24" Radius	36" Radius	48" Radius	60" Radius	
11¼°	F904001124	F904001136	F904001148	F904001160	25
22½°	F904002224	F904002236	F904002248	F904002260	25
45°	F904004524	F904004536	F904004548	F904004560	25
90°	F904009024	F904009036	F904009048	F904009060	25

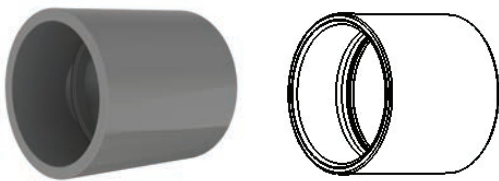
If you don't see the product you require, please call for availability
Product availability varies by region and minimum run quantities may apply



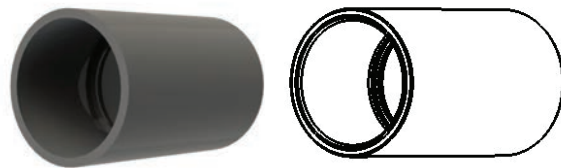
Couplings

Trade Size	Part Number	Package Quantity
Couplings		
½	CP05	200
¾	CP07	125
1	CP10	70
1¼	CP12	40
1½	CP15	30
2	CP20	40
2½	CP25	20
3	CP30	40
3½	CP35	30
4	CP40	20
5	CP50	10
6	CP60	8
8*	CP80	1
Long Line Couplings		
1½	LLC15	25
2	LLC20	20
2½	LLC25	25
3	LLC30	25
4	LLC40	15
5	LLC50	8
6	LLC60	4

*8 inch products are not included in UL 651
Conforms to NEMA TC-3



Coupling
Listed to Safety Standard UL 651

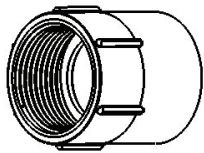


Long Line Coupling
Product appearance may vary by region

Adapters



Terminal Adapters



Female Adapters

Trade Size	Part Number	Package Quantity
Terminal Adapters		
½	TA05	200
¾	TA07	125
1	TA10	70
1¼	TA12	40
1½	TA15	30
2	TA20	40
2½	TA25	20
3	TA30	40
3½	TA35	30
4	TA40	20
5	TA50	10
6	TA60	8
8*	TA80	2
Female Adapters		
½	FA05	200
¾	FA07	125
1	FA10	70
1¼	FA12	40
1½	FA15	30
2	FA20	40
2½	FA25	20
3	FA30	40
3½	FA35	30
4	FA40	20
5	FA50	10
6	FA60	8
8*	FA80	2

*8 inch products are not included in UL 651



Expansion Couplings and Repair Sleeve Couplings

Trade Size	Part Number	Package Quantity
One Piece Expansion Couplings		
½	EJ-105	80
¾	EJ-107	50
1	EJ-110	50
1¼	EJ-112	25
1½	EJ-115	25
2	EJ-120	10
Two Piece Expansion Couplings		
½	EJ05	25
¾	EJ07	25
1	EJ10	40
1¼	EJ12	20
1½	EJ15	20
2	EJ20	10
2½	EJ25	9
3	EJ30	9
3½	EJ35	5
4	EJ40	5
5	EJ50	1
6	EJ60	1
Repair Sleeve Couplings		
1	40REC10	50
1¼	40REC12	50
1½	40REC15	50
2	40REC20	50
2½	40REC25	30
3	40REC30	30
4	40REC40	30
5	40REC50	15
6	40REC60	10

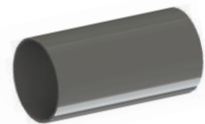
Product availability may vary by region



Expansion Coupling
One Piece



Expansion Coupling
Two Piece



Repair Sleeve Coupling

Swedge Couplings and Swedge Reducers

Swedge Couplings

Trade Size	Part Number	Package Quantity
DB		
1½	60SWC15	50
2	60SWC20	50
3	60SWC30	30
4	60SWC40	30
5	60SWC50	15
6	60SWC60	10
Schedule 40		
1	40SWC10	50
1¼	40SWC12	50
1½	40SWC15	50
2	40SWC20	50
2½	40SWC25	30
3	40SWC30	30
4	40SWC40	30
5	40SWC50	15
6	40SWC60	10
8	40SWC80	6
Schedule 80		
2	80SWC20	50
3	80SWC30	30
C-Duct		
4 C-Duct to 4 Duct	C60SWC40	30
4	CSWC40	30

Product availability may vary by region



Swedge Coupling

Swedge Reducers Spigot x Spigot

Trade Size	Part Number	Package Quantity
DB		
2½ x 2	60SW2520SS	100
3 x 2	60SW3020SS	80
3 x 2½	60SW3025SS	80
4 x 3	60SW4030SS	60
5 x 4	60SW5040SS	36
6 x 5	60SW6050SS	36
Schedule 40		
1 ½ x 1	40SW1510SS	25
2 x 1½	40SW2015SS	25
2½ x 2	40SW2520SS	80
3 x 2	40SW3020SS	80
3 x 2½	40SW3025SS	80
4 x 3	40SW4030SS	60
5 x 4	40SW5040SS	36
6 x 5	40SW6050SS	36
Schedule 80		
3 x 2	80SW3020SS	80
4 x 3	80SW4030SS	60
5 x 4	80SW5040SS	36

Product availability may vary by region



Swedge Reducer Spigot x Spigot

5° Couplings and Meter Risers

5° Couplings

Trade Size	Part Number		Package Quantity
	Bell x Bell	Bell x Spigot	
DB			
3	605EC30BB	605EC30BS	30
4	605EC40BB	605EC40BS	30
5	605EC50BB	605EC50BS	15
6	605EC60BB	605EC60BS	10
Schedule 40			
2	405EC20BB	405EC20BS	50
3	405EC30BB	405EC30BS	30
4	405EC40BB	405EC40BS	30
5	405EC50BB	405EC50BS	15
6	405EC60BB	405EC60BS	10
C-Duct			
4	C5EC40BB	C5EC40BS	30

Product availability may vary by region



Bell x Bell

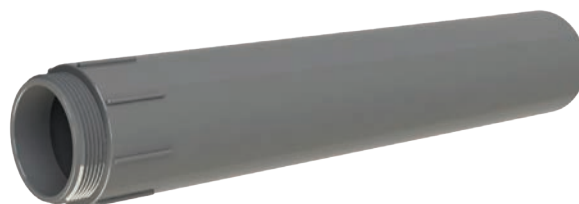


Bell x Spigot

Slip Meter Risers

Trade Size	Part Number	Package Quantity
Schedule 40		
2	MTR40200	10
2½	MTR40250	8
3	MTR40300	5
4	MTR40400	3

Product availability may vary by region

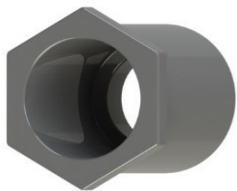


Meter Riser

End Bells and Reducer Bushings



End Bell



Reducer Bushing

Trade Size	Part Number	Package Quantity
End Bells		
½	MEB05	100
¾	MEB07	100
1	MEB10	50
1¼	MEB12	50
1½	MEB15	50
2	MEB20	40
2½	MEB25	30
3	MEB30	50
3½	MEB35	50
4	MEB40	50
5	MEB50	25
6	MEB60	15
8	MEB80	1
Reducer Bushings		
¾ x ½	MR0705	100
1 x ½	MR1005	100
1 x ¾	MR1007	100
1¼ x ¾	MR1207	50
1¼ x 1	MR1210	50
1½ x 1	MR1510	50
1½ x 1 ¼	MR1512	50
2 x 1	MR2010	50
2 x 1 ¼	MR2012	25
2 x 1 ½	MR2015	25
2½ x 2	MR2520	15
3 x 2	MR3020	25
3 x 2 ½	MR3025	15
4 x 2	MR4020	10
4 x 3	MR4030	10
4 x 3 ½	MR4035	15

Product availability may vary by region

Duct Spacers and Junction Boxes

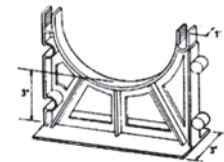
Trade Size	Part Number	Package Quantity	Part Number	Package Quantity
	Intermediate Spacers		Base Spacers	
2 x 1½	IV2015	350	BV2015	250
2 x 2	IV2020	300	BV2020	225
2 x 3	IV2030	200	BV2030	225
3 x 1½	IV3015	225	BV3015	175
3 x 2	IV3020	200	BV3020	155
3 x 3	IV3030	125	BV3030	150
4 x 1	IV4010	200	BV4010	175
4 x 1½	IV4015	150	BV4015	140
4 x 2	IV4020	125	BV4020	140
4 x 3	IV4030	90	BV4030	120
5 x 1½	IV5015	100	BV5015	120
5 x 2	IV5020	100	BV5020	120
5 x 3	IV5030	80	BV5030	100
6 x 1½	IV6015	100	BV6015	100
6 x 2	IV6020	90	BV6020	100
6 x 3	IV6030	70	BV6030	95
8 x 2	IV8020	60	BV8020	50



Intermediate Spacers

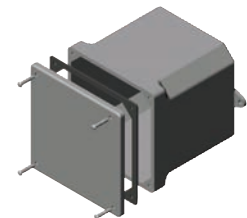


Intermediate and Base Spacers together



Base Spacers

Trade Size	Self Tapping Screws	Package Quantity	Brass Screw Inserts	Package Quantity
	Part Number		Part Number	
4x4x2	JB442S	10	JB442	15
4x4x4	JB444S	10	JB444	10
4x4x6	JB446S	10	JB446	8
5x5x2	JB552S	10	JB552	12
6x6x4	JB664S	10	JB664	15
6x6x6	JB666S	5	JB666	4
8x8x4	JB884S	5	JB884	4
8x8x7	JB887S	4	JB887	4
12x12x4	JB12124S	2	JB12124	2
12x12x6	JB12126S	2	JB12126	4
12x12x8	JB12128S	3	JB12128	3



Junction Box

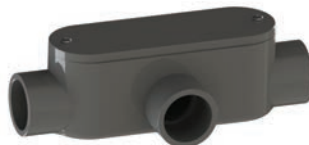
Product appearance may vary by region
Product availability may vary by region

Trade Size	Part Number						Package Quantity	
	LB	T	LR	LL	E	C		T Only
½	LB05	T05	LR05	LL05	E05	C05	25	25
¾	LB07	T07	LR07	LL07	E07	C07	15	15
1	LB10	T10	LR10	LL10	E10	C10	10	10
1¼	LB12	T12	LR12	LL12	E12	C12	10	10
1½	LB15	T15	LR15	LL15	E15	C15	10	10
2	LB20	T20	LR20	LL20	E20	C20	5	5
2½	LB25	T25	LR25	LL25	E25	C25	5	2
3	LB30	T30	LR30	LL30	E30	C30	5	2
3½	LB35	T35	LR35	LL35	E35	C35	4	1
4	LB40	T40	LR40	LL40	E40	C40	4	1

Product availability may vary by region



Type LB



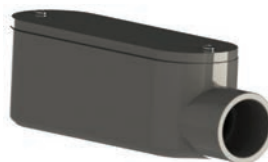
Type T



Type LR



Type LL



Type E



Type C

Accessories

Trade Size	Part Number	Package Quantity
Meter Offsets		
1¼	MO12	50
2	MO20	25
Two Hole Pipe Straps		
½	PS05	400
¾	PS07	200
1	PS10	200
1¼	PS12	200
1½	PS15	200
2	PS20	200
2½	PS25	100
3	PS30	100
4	PS40	100
Pull Elbows		
½ & ¾	PULEL0705	50
Expandable Plugs		
2	KW20L	50
2½	KW25L	30
3	KW30L	30
4	KW40L	30
5	KW50L	20
Temporary Plugs		
1	UTP10	100
1¼	UTP12	100
1½	UTP15	100
2	UTP20	100
2½	UTP25	100
3	UTP30	80
3½	UTP35	80
4	UTP40	50
5	UTP50	40
6	UTP60	30
8	UTP80	12

Product availability may vary by region



Meter Offset



Two Hole Pipe Strap



Pull Elbow



Expandable Plug



Temporary Plug