



► MB1 LED Message Board

FEATURES

- Incorporates a co-extruded, polycarbonate housing.
- Powerful message board LEDs are available in Blue, Amber and Green.
- Includes hardware kit with mount brackets and carriage bolts.
- Board connects to a controller via CAT5 serial cable.
- LED display can be “dimmed” to adjust message contrast.
- Keypad has adjustable backlighting.
- LCD display has adjustable contrast.
- The system comes equipped with a set of 60 default messages.
- PC software allows the administrator to create custom message sets.
- Messages can be customized with a variety of features.
- MB1 memory capacity can hold over 500 messages.
- Three-year warranty.

Superior public safety messaging system

MB1 LED Message Board is a public safety messaging system that displays different advisories notifying motorists and pedestrians of emergency incidents, road conditions, and other events. MB1 LED Message Board is ideal for police, fire and work truck applications.

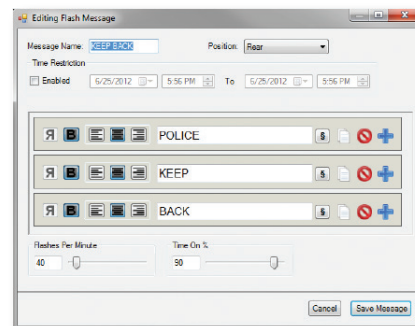
The MB1 system includes a LED message display and internally mounted controller. The MB1 has the capability to hold up to 500 messages. The controller enables the vehicle operator to activate the LED message display board with tactical push-button control.

Pre-programmed or custom messages

MB1 models have pre-programmed messages or custom messages can be created using a PC based software. A name of up to 20 characters can be assigned to each programmed message. The message displayed across the message board will also display across the control head. Using the message based software, programmed messages can also be copied to other vehicle message boards.



Control head enables the operator to activate the LED message board with tactical push-button control.



Customize messages are created and named using a PC based software.



Available Characters

128 characters are available for message creation
(66 "keyboard" characters and 62 "special" characters listed below)

Available "keyboard" characters:

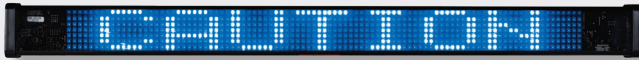
ABCDEFGHIJKLMNOPQRSTUVWXYZ
0123456789
`~!@#\$%^&*()-_+=[\]{}|'\"/?,<.>

Note: Letters are only available as "capitalized, upper case"

Available "special" characters:

€ f † ‡ Š < Œ > Ÿ ¡ ¢ £ ¥ ¦ § « ¬ ° ± μ ¶ » ¼ ½ ¿ À Á Â Ã
Ä Å Æ Ç È É Ê Ë Ì Í Î Ï Ð Ñ Ò Ó Ô Õ Ö × Ø Ù Ú Û Ü Ý Þ
÷ Σ Ω Ψ π ™

Examples of different font choices

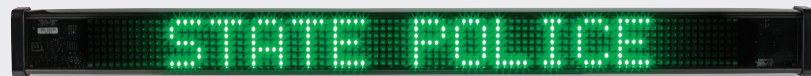


Bold Font



Standard Font

Examples of messages and color choices



MB1 mounted on a Ford Interceptor Utility



MB1 mounted on a HRX Series Headache Rack installed on a Chevrolet Silverado

Name	Type	Message
1 POLICE EMERGENCY	Scroll	POLICE EMERGENCY KEEP BACK
2 SLOW DOWN	Flash	POLICE\SLOWDOWN
3 KEEP BACK	Flash	POLICE\KEEP\DOWN
4 RESTRICTED ZONE	Scroll	RESTRICTED ZONE AHEAD DO NOT PROCEED
5 LEFT ARROW	Advanced	<<<<<<<<
6 RIGHT ARROW	Advanced	>>>>>>>>
7 SPLIT ARROW	Advanced	<<<< >>>>
8 ACCIDENT SLOW	Flash	ACCIDENT\AHEAD\SLOW DOWN
9 MERGE RIGHT	Advanced	MERGE\RIGHT\8 spaces\ >>>>>>>>
10 MERGE LEFT	Advanced	MERGE\LEFT\ <<<<<<<<<<
11 SPLIT TRAFFIC	Advanced	SPLIT\TRAFFIC\ <<<< >>>>
12 STAY IN LANE	Flash	STAY\IN\LANE
13 LEFT LANE CLOSED	Flash	LEFT\LANE\CLOSED
14 RHT LANE CLOSED	Flash	RIGHT\LANE\CLOSED
15 ROAD CLOSED	Flash	ROAD\CLOSED
16 STREET CLOSED	Flash	STREET\CLOSED
17 SLOW TRAFFIC AHEAD	Flash	SLOW\TRAFFIC\AHEAD
18 REDUCE SPEED	Flash	CAUTION\REDUCE\SPEED
19 WET ROAD	Flash	CAUTION\WET\ROAD
20 CAU ROAD ICING	Scroll	CAUTION\ROAD\ICING
21 POOR VISIBILITY	Flash	CAUTION POOR VISIBILITY
22 SCHOOL CROSS	Flash	CAUTION\SCHOOL\CROSS
23 DETOUR AHEAD	Flash	DETOUR\AHEAD
24 EVENT AHEAD	Flash	EVENT\PARKING\AHEAD
25 EVENT EXIT	Flash	EVENT\PARKING\EXIT\HERE
26 EVENT NEXT	Flash	EVENT\PARKING\NEXT\EXIT
27 KEEP LEFT	Advanced	KEEP\LEFT
28 KEEP RIGHT	Advanced	KEEP\RIGHT
29 STREET CLOSED ALT	Scroll	STREET CLOSED USE ALTERNATE ROUTE
30 LANE CLOSED MRG RHT	Flash	LANE\CLOSED\ MERGE\RIGHT
31 LANE CLOSED MRG LEFT	Flash	LANE\CLOSED\ MERGE\LEFT

Name	Type	Message
32 SLOW CONST AHEAD	Scroll	SLOW CONSTRUCTION AHEAD
33 SLOW CONST ZONE	Scroll	SLOW DOWN CONSTRUCTION ZONE
34 PARADE ROUTE	Flash	PARADE\ROUTE\NO\ PARKING
35 DO NOT TAILGATE	Scroll	EMERGENCY VEHICLE DO NOT TAILGATE
36 ROAD FLOODING	Flash	CAUTION\ROAD\FLOODING
37 ENTRANCE CLOSED	Flash	ENTRANCE\CLOSED
38 TRAFFIC EXIT	Flash	DETOUR\ALL\TRAFFIC\ MUST\EXIT
39 EXIT CLOSED	Flash	EXIT\CLOSED
40 RAMP CLOSED	Flash	RAMP\CLOSED
41 DWI CHECK POINT	Scroll	POLICE DWI CHECKPOINT AHEAD PREPARE TO STOP
42 POLICE CHECK POINT	Scroll	POLICE CHECKPOINT PREPARE TO STOP
43 AMBER ALERT	Flash	AMBER\ALERT
44 PROCEED WITH CAUTION	Flash	PROCEED\WITH\CAUTION
45 DISABLED VEHICLE	Flash	DISABLED\VEHICLE\AHEAD
46 SHERIFF	Steady On	SHERIFF
47 STATE POLICE	Steady On	STATE POLICE
48 STATE TROOPER	Steady On	STATE TROOPER
49 PEDESTRIAN	Scroll	PEDESTRIAN CROSSWALK AHEAD
50 SPEED LIMIT	Scroll	SPEED LIMIT ENFORCED
51 DO NOT TEXT	Scroll	DO NOT TECT & DRIVE
52 BUCKLE UP	Steady On	BUCKLE UP
53 CHILD SAFETY	Scroll	CHILD SAFETY CHECKPOINT
54 CHILD SEAT	Scroll	CHILD SEAT CHECKPOINT
55 DON'T DRINK	Scroll	DON'T DRINK AND DRIVE
56 WORK ZONE AHEAD	Scroll	WORK ZONE AHEAD
57 HEAVY TRAFFIC	Scroll	HEAVY TRAFFIC AHEAD
58 FLOODING AHEAD	Scroll	FLOODING AHEAD
59 SEVERE WEATHER	Scroll	SEVERE WEATHER APPROACHING SEEK SHELTER
60 HAVE A SAFE DAY	Steady On	HAVE A SAFE DAY

Specify model

- MB1 Public Safety messaging system with Blue LED message display and controller, 12 VDC
- MB1-A Public Safety messaging system with Amber LED message display and controller, 12 VDC
- MB1-G Public Safety messaging system with Green LED message display and controller, 12 VDC
- MB1-BNRW Public safety messaging system with Blue LED message display and controller, narrow mounting applications, 12 VDC

Mounting Kits (Sold Separately)

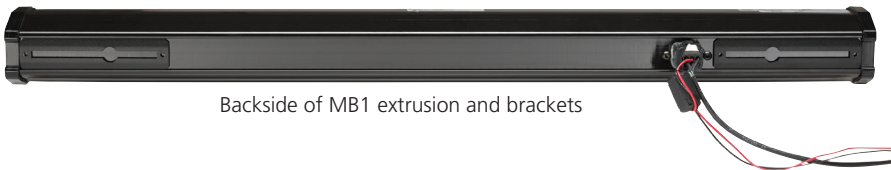
- MBK03H Kit for mounting MB1 to rear of Valor® lightbars with Hook Mount
- MBK01 Kit for mounting MB1 in rear of interior of Ford Police Interceptor Utility, 2011-2019
- MBK02 Kit for mounting MB1 to rear interior of Chevy Tahoe, 2015-2019
- MBK04 Kit for mounting MB1 to rear of Integrity®, Legend®, LPX, and Navigator® lightbars (except for HotFoot™ versions of these bars)
- MBK05 Kit for mounting MB1 to rear of Vision® SLR lightbar
- MBK-06 Kit for mounting MB1-BNRW to the rear interior of Dodge Durango, 2011-2019

Specifications	
LED Color Options	Blue, Amber or Green
LED Count	672 LEDs
Operating Temp	-30°C to +65°C
Voltage	12 VDC

	Message Board	Controller
Physical Specifications		
Length	35.2 in (89.4 cm)	6.8 in (17.3 cm)
Height	3.0 in (7.6 cm)	3.3 in (8.3 cm)
Width	3.3 in (8.4 cm) - without brackets 4.8 in (12.2 cm) - with brackets	1.6 in (4.1 cm)

Net Weight	
Message Board	7.0 lbs (3.2 kg)
Controller	0.8 lbs (0.4 kg)

Ship Weight	
Message Board and Controller	10.0 lbs (4.5 kg)



Integrity, Legend, Navigator, HotFoot and Vision are trademarks of Federal Signal Corporation. Ford and Chevrolet are trademarks of their respective owners.

©2017 Federal Signal Corporation. M3011 | 417