

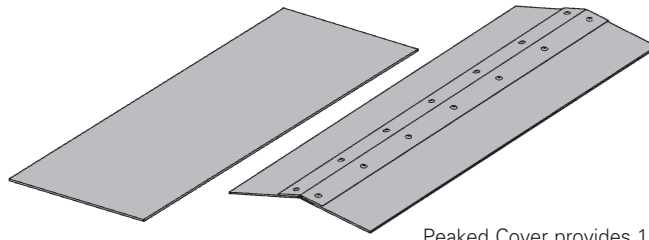
Fiberglass - Covers & Cover Accessories

Covers

Material Thickness: .090" (2.3)

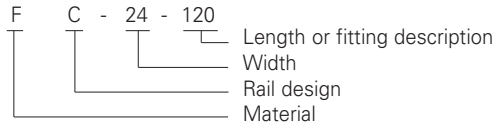
Cover Length: 10' (3m)

Standard Mounting Hardware: (10 each) #10 x 3/4" stainless, self drilling screws provided with each section



Peaked Cover provides 1 to 3.7 pitch
Peaked covers available for straight sections only.
No Hardware provided.

Covers



- F C - 24 - 120 = Flat polyester
- FV C - 24 - 120 = Flat vinyl ester
- FA C - 24 - 120 = Flat zero halogen/Dis-Stat
- FP C - 24 - 120 = Peaked polyester
- FVP C - 24 - 120 = Peaked vinyl ester
- FAP C - 24 - 120 = Peaked zero halogen/Dis-Stat

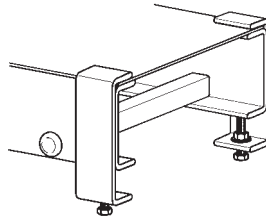
Quantity of Standard Cover Clamps Required

Straight Section 60" or 72"	4 pcs.
Straight Section 120" or 144"	6 pcs.
Horizontal/Vertical Bends	4 pcs.
Tees	6 pcs.
Crosses	8 pcs.

Note: When using the Heavy Duty Cover Clamp, only one-half the number of clamps stated above is required.

Standard Cover Clamp

- Furnished in pairs with hardware.

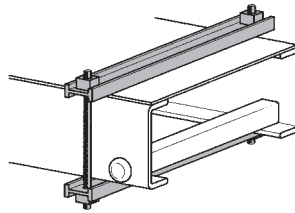


Catalog No.	Side Rail Height	
	in.	(mm)
9(Δ)-9013	3	(76)
9(Δ)-9014	4	(101)
9(Δ)-9016	6	(152)

Heavy Duty Cover Clamp

Recommended for outdoor service.

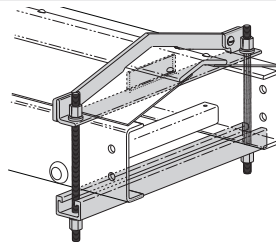
- W = tray width
- Heavy duty cover clamp available for flat covers only



Catalog No.	Side Rail Height	
	in.	(mm)
9F-W-9034	3	(76)
9F-W-9044	4	(101)
9F-W-9064	6	(152)
9F-W-9084	8	(203)

Peaked Cover Clamp

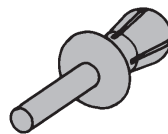
- W = tray width



Catalog No.	Side Rail Height	
	in.	(mm)
9F-W-9034P	3	(76)
9F-W-9044P	4	(101)
9F-W-9064P	6	(152)
9F-W-9084P	8	(203)

Thermo Plastic Drive Rivet

- Sold individually.
- Shipped in packages of 25 pcs.



Catalog No.

- TPDR

Material Designations

(Δ) Insert one of the following material designations when required.

- F = Polyester Resin (Example: 9F-9013) available for all side rail heights
- FV = Vinyl Ester Resin (Example: 9FV-9013) available for all side rail heights
- FA = Zero Halogen/Dis-Stat Resin (Example: 9FA-9016) available for 6" side rail height only

● Green = Fastest shipped items ● Black = Normal lead-time items ● Red = Normally long lead-time items

Dimensions shown in parentheses are in millimeters, unless otherwise specified.